

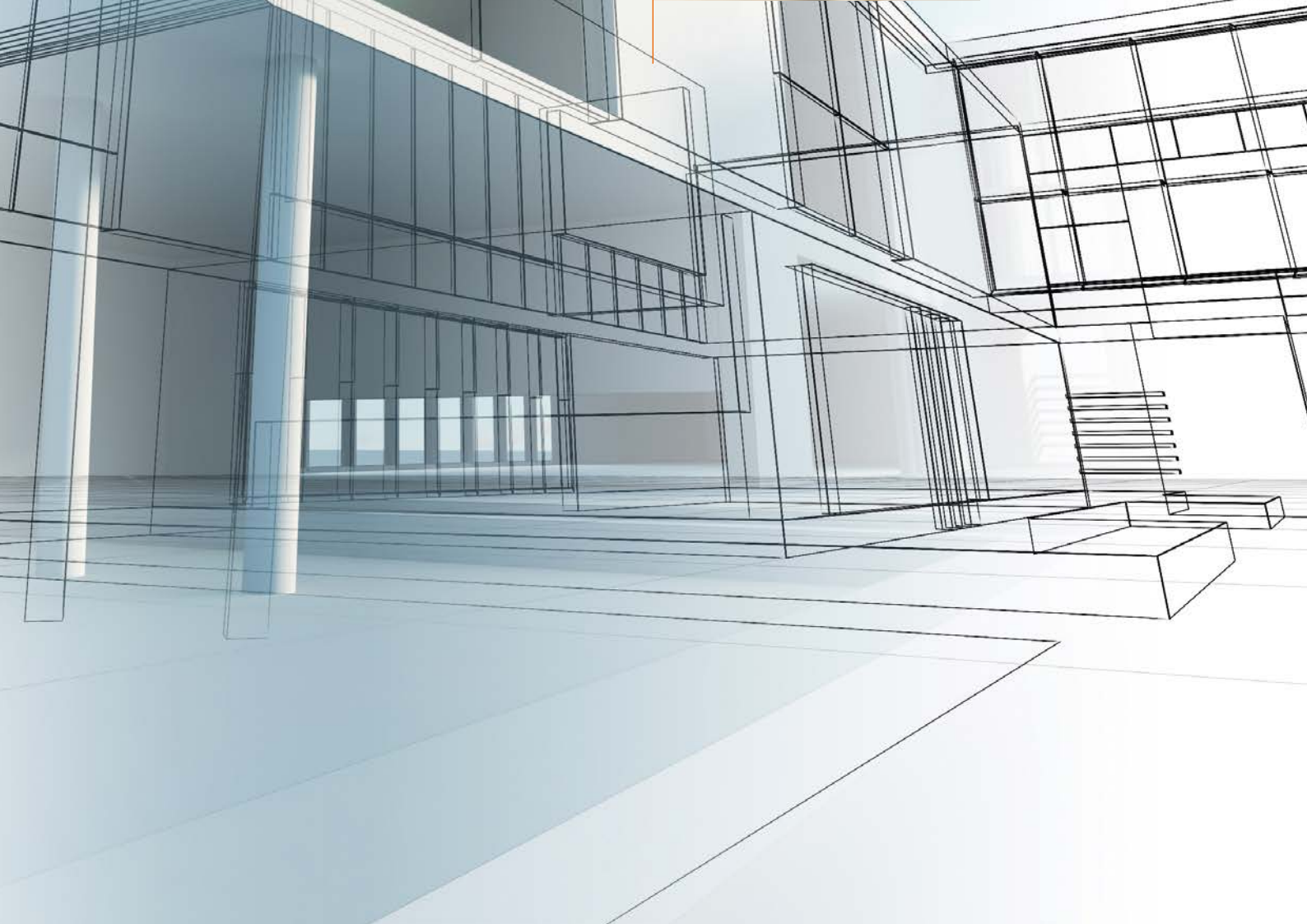


Details allow the visualisation of ideas.  
Even if they remain invisible.

*Hahn VL Hinges*



Plausible design down to the smallest detail.



Aesthetically concealed.



Clear forms with high functionality and quality set accents in architecture nowadays just as in the past. The development of our concealed hinges for aluminium doors, steel doors and PVC doors focuses on that. The design hinges which are inconspicuous when a door is closed allow room for creativity.

Design perfection down to the details.



A well-designed entryway is the highlight of every building. It even enhances inconspicuous facades and makes the intention of the design easily perceptible and inviting while clearly separating public and private spheres.

Success is determined by the strength of the design, the idea, and its brilliant implementation with appealing design elements.

More freedom and clarity of design  
– with concealed hinges by Dr. Hahn.

# The detail perfects the idea.

Concealed hinges by Dr. Hahn broaden the spectrum of construction options with their simplicity and consistency. The portfolio offers free choice of materials.

For aesthetical and confident design leaving room for the idea.

## Hahn VL-Band ST

for steel doors

red dot award for  
product design 2002



Design Award of the  
Federal Republic of Germany  
– Nominated in 2004



Designpreis der  
Bundesrepublik  
Deutschland

Nominiert 2004



Max. opening angle: 105°  
Clear width: 100 %

- 3-piece concealed door hinge for steel doors
- Distinguished product design: red dot award 2002
- Maximum quality of workmanship
- Door weight up to 180 kg
- Adjustable in three directions
  - horizontal  $\pm 2$  mm
  - vertical + 3 mm
- Stainless steel materials
- Easy handling

## Hahn VL-Band AL

for aluminium doors



Awarded with the  
innovation prize  
"Architektur und  
Bauwesen" 2004

## Hahn VL-Band 180°

for aluminium doors



Max. opening angle: 105°  
Clear width: 100 %

- 3-piece concealed door hinge for aluminium doors
- Maximum quality of workmanship
- Door weight up to 120 kg
- Adjustable in four directions
  - horizontal  $\pm 2$  mm
  - vertical  $\pm 3$  mm
- Stainless steel materials
- Maintenance-free
- Easy handling



Max. opening angle: 180°  
Clear width: 100 %

- Concealed hinge with an opening angle of 180° for flush doors made of aluminium
- Swivels around two pivoting points which can be locked or released interdependently
- Maximum quality of workmanship
- Door weight up to 180 kg
- Adjustable in four directions
  - horizontal  $\pm 2,5$  mm
  - vertical  $+ 3$  mm
- Stainless steel materials
- Easy handling



## Hahn VL-Band KT for PVC doors



Max. opening angle: 105°  
Clear width: 100 %

- Concealed hinge for doors made of PVC profiles for commercial and residential architecture
- Maximum quality of workmanship
- Door weight up to 120 kg
- Adjustable in four directions
  - horizontal up to  $\pm 3$  mm (depending on section)
  - vertical  $\pm 5$  mm
- Stainless steel materials
- Easy handling

Concealed functionality in perfection.



The perfect solution for every situation.



An enthusiasm for excellent design, perfect technology and outstanding service have made Dr. Hahn one of the leading developers and manufacturers of hinges for metal and PVC doors. Since 1961 our employees construct and produce door hinges with an eye for details.

Almost any installation situation on metal and PVC doors can be solved with a Dr. Hahn hinge – always keeping easy handling in mind to save valuable time and resources of the installer and to guarantee smooth working processes up to the complete installation of the door.

Hinges. Made in Germany.

