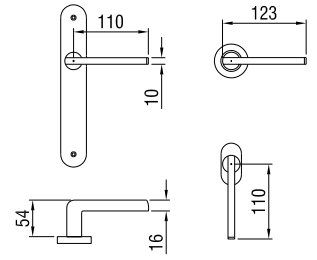



# art. 119 Q-10

design: Studio Reguitti  
 materiale: Ottone  
 material: Solid Brass

**Brass Class**  
 100% Ottone




119 MR Q86 OSC 




119 MR 006 OSC




119 MR 416 LV 



119 MR 816 OC 



119 MR 916 OSC 



119 MR Q86 OC 



119 MP 188 OSC



119 SE Q13 OSC  
 119 SG Q13 OSC

speciale  
 special  
 25



119 DK 025  
 OSC



119 DK 015 OSC  
 119 DK 024 OSC



119 DK Q15 OSC



## MANIGLIA CON PLACCA / LEVER HANDLE ON PLATE



119 MP 130 Maniglia con placca  
Lever Handle on plate 130 mm 245x50 con molla e grano  
with spring and grub screw

•

•

1

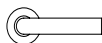
119 MP 188 Maniglia con placca  
Lever Handle on plate 188 mm 255x42 con molla e grano  
with spring and grub screw

•

•

1

## MANIGLIA SU ROSETTA / LEVER HANDLE ON ROSE



119 MR 006 Maniglia con rosetta  
Lever Handle on rose 006 mm Ø50X8 con molla e grano  
with spring and grub screw

•

•

1



119 MR 416 Maniglia con rosetta  
Lever Handle on rose 416 mm Ø45X9 con molla e grano  
with spring and grub screw

•

•

1



119 MR 816 Maniglia con rosetta  
Lever Handle on rose 816 mm Ø50X10 con molla e grano  
with spring and grub screw

•

•

1



119 MR 916 Maniglia con rosetta  
Lever Handle on rose 916 mm 62x32 con molla e grano  
with spring and grub screw

•

•

1



119 MR 9Q6 Maniglia con rosetta  
Lever Handle on rose 9Q6 mm 61x31 con molla e grano  
with spring and grub screw

•

•

1



119 MR Q86 Maniglia con rosetta  
Lever Handle on rose Q86 mm 50x50 con molla e grano  
with spring and grub screw

•

•

1

## CREMONESE / WINDOW HANDLE WITH MECHANISM



119 SG Q13\* Cremonese con placca  
Window Handle on plate Q13 mm 160X33 coprivite con gioco  
with cover-screw plate with mechanism

•

•

2

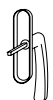
119 SG 070\* Cremonese con placca  
Window Handle on plate 070 mm 189x36 coprivite con gioco  
with cover-screw plate with mechanism

•

•

2

## MARTELLINA / WINDOW HANDLE WITHOUT MECHANISM



119 SE Q13\* Martellina con placca  
Window Handle on plate Q13 mm 160X33 with cover-screw plate with square-pin  
mm 7 coprivite q.7

•

•

2

119 SE 070\* Martellina con placca  
Window Handle on plate 070 mm 189x36 with cover-screw plate with square-pin  
mm 7 coprivite q.7

•

•

2

## DREH KIPP / DREH KIPP



119 DK 015 Dreh Kipp con rosetta  
Dreh Kipp on rose 015 mm 65x31 con movimento in metallo  
with meta mechanism

•

•

3

119 DK 025 Dreh Kipp con rosetta  
Dreh Kipp on rose 025 mm 65x25 con movimento in metallo  
with meta mechanism

•

•

3



119 DK 024 Dreh Kipp con rosetta  
Dreh Kipp on rose 024 mm 65x31 c/mov. in metallo e quadro regolabile  
with metal mec. and adjustable square-pin

•

•

3

119 DK Q15 Dreh Kipp con rosetta  
Dreh Kipp on rose Q15 mm 65x31 con movimento in metallo  
with meta mechanism

•

•

3

\* Placca adatta a movimenti intercambiabili  
Plate suitable to interchangeable movements

Per caratteristiche tecniche rosette vedi apposito capitolo soluzioni tecniche e componenti / For technical specifications rosettes see specific section technical solutions and components

## A RICHIESTA / ON REQUEST:

- Mezza maniglia con placca o con rosetta (specificare se destra o sinistra) / Half lever handle on plate or on rose (to specify if right or left)
- Maniglia con rosette senza bocchette / Lever handle on rose without rose for key
- Coppie impugnature (CM) con grano e ferro senza rosette e senza bocchette / Pair levers (CM) with grub screws and square pin without rose and without rose for key