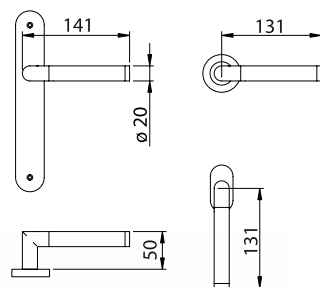


art. 140 L-PLUS

design: Studio Reguitti
materiale: Ottone
material: Solid Brass

Brass Class
100% Ottone



140 MR 005 OSC/OC



140 MR 005 NR/OC



140 MR Q86 OSC/OC



140 MR Q09 OSC/OC



140 MP 188 OSC/OC



140 DK 015 OSC/OC



140 DK Q15 OSC/OC

VERSIONI / VERSIONS



Finiture
Finishes

					OS/LV	OSC/OC	NR/OSC NR/OC	
MANIGLIA CON PLACCA / LEVER HANDLE ON PLATE								
	140 MP 188	Maniglia con placca Lever Handle on plate	188 mm 255x42	con molla e grano with spring and grub screw	•	•	•	1
	140 MP 130	Maniglia con placca Lever Handle on plate	130 mm 245x50	con molla e grano with spring and grub screw	•	•	•	1
MANIGLIA CON ROSETTA / LEVER HANDLE ON ROSE								
	140 MR 005	Maniglia con rosetta Lever Handle on rose	005 mm Ø50x8	tipo lusso con molla e grano lusso type with spring and grub screw	•	•	•	2
	140 MR 416	Maniglia con rosetta Lever Handle on rose	416 mm Ø45x9	con molla e grano with spring and grub screw	•	•	•	1
	140 MR Q09	Maniglia con rosetta Lever Handle on rose	Q09 mm 61x31	con molla e grano with spring and grub screw	•	•	•	1
	140 MR Q86	Maniglia con rosetta Lever Handle on rose	Q86 mm 50x50	con molla e grano with spring and grub screw	•	•	•	1
CREMONESE / WINDOW HANDLE WITH MECHANISM								
	140 SG 070*	Cremonese con placca Window Handle on plate	070 mm 189x36	coprivite con gioco with cover-screw plate with mechanism	•	•	•	2
MARTELLINA / WINDOW HANDLE WITHOUT MECHANISM								
	140 SE 070*	Martellina con placca Window Handle on plate	070 mm 189x36	coprivite q.7 with cover-screw plate with square-pin mm 7	•	•	•	2
DREH KIPP / DREH KIPP								
	140 DK 015	Dreh Kipp con rosetta Dreh Kipp on rose	015 mm 65x31	con movimento in metallo with metal mechanism	•	•	•	3
	140 DK Q15	Dreh Kipp con rosetta Dreh Kipp on rose	Q15 mm 65x31	con movimento in metallo with metal mechanism	•	•	•	2

* Placca adatta a movimenti intercambiabili
Plate suitable to interchangeable movements



140 MP 130 OSC/OC

Per caratteristiche tecniche rosette vedi apposito capitolo soluzioni tecniche e componenti / For technical specifications rosettes see specific section technical solutions and components

A RICHIESTA / ON REQUEST:

- Mezza maniglia con placca o con rosetta (specificare se destra o sinistra) / Half lever handle on plate or on rose (to specify if right or left)
- Maniglia con rosette senza bocchette / Lever handle on rose without rose for key
- Coppie impugnature (CM) con grano e ferro senza rosette e senza bocchette / Pair levers (CM) with grub screws and square pin without rose and without rose for key